



**SIUI**

**SHANTOU INSTITUTE OF ULTRASONIC INSTRUMENTS**

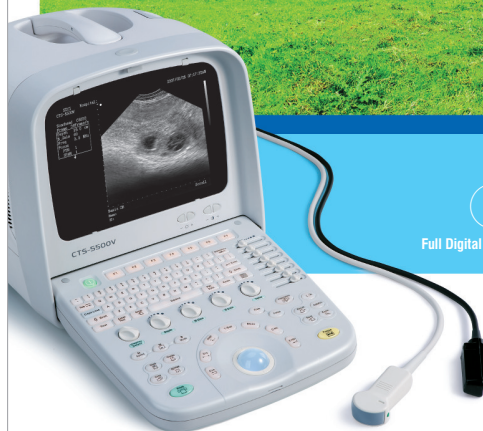
Add: #77, Jinsha Road, Shantou 515041, Guangdong, China

Tel: +86-754-8250150 Fax: +86-754-8251499

E-mail: [siui@siui.com](mailto:siui@siui.com) Website: <http://www.siui.com>



Specifications and appearance are subject to change without prior notice.  
©2012 SHANTOU INSTITUTE OF ULTRASONIC INSTRUMENTS



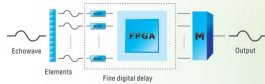
**CTS-5500V**  
 Full Digital Veterinary Ultrasound Imaging System

- Digital Beam Forming Technology
- Broadband Five-frequency Probes
- Powerful Document Management System
- Special Veterinary Software Package

**SIUI**

# CTS-5500V

FULL DIGITAL VETERINARY ULTRASOUND  
IMAGING SYSTEM



Accurate beam forming and signal processing, digital image acquisition and processing ensure images with clear-cut edge and no distortion.

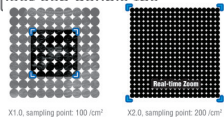


The CTS-5500V is a high-end digital veterinary ultrasound imaging system. It can be equipped with a variety of special probes, meeting the examination and

## Powerful System Functions

### Unique High-Definition Zoom Function

When zooming the ROI, the process double the



### PIP (Picture-in-Picture) Function

The user can zoom in any region of interest(ROI),

### User-defined Function Key

The user can assign a frequently-used function (e.g. BPD) on a

### Invertible Image Orientation

Images can be inverted not only up/down/left/right, but also 90°

### Smart Tracing Function

When measuring area or circumference, if the



### IP One-key Optimization

One key for eight-parameter adjustment, easy image optimization.

## Perfect Document Management System

### Storage Media

Hard disk, CD, USB disk and DICOM.

### Storage Formats

BMP, JPG, CTS, CIN and AVI.

### Cineloop

Each file has up to 256 frames, play back speed adjustable.

### Auto Creation of Report

All the measurement results are entered in the report without inputting manually and an image and file report is created automatically.

### Annotation

300 annotations for recall, user-defined annotations allowed.

### Off-line Diagnostic Function

For off-line review and analysis of diagnostic process.

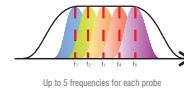
## Extensive Clinical Application and Abundant Software

The system can be widely used on animals such as bovine, ovine, feline, equine and porcine. It has a wide range of **Veterinary OB Software**

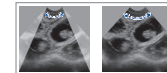
<b>Bovine</b>	<ul style="list-style-type: none"> <li>BPD (Biparietal Diameter)</li> <li>BD (Body Diameter)</li> <li>CRL (Crown-Rump Length)</li> <li>TD (Trunk Diameter)</li> </ul>	<b>Canine</b>	<ul style="list-style-type: none"> <li>GS (Gestational Sac Diameter)</li> <li>CRL (Crown-Rump Length)</li> <li>HD (Head Diameter)</li> <li>BD (Body Diameter)</li> </ul>	<b>Ovine</b>	<ul style="list-style-type: none"> <li>BPD (Biparietal Diameter)</li> <li>CRL (Crown-Rump Length)</li> <li>TD (Trunk Diameter)</li> </ul>
<b>Feline</b>	<ul style="list-style-type: none"> <li>HD (Head Diameter)</li> <li>BD (Body Diameter)</li> </ul>	<b>Equine</b>	<ul style="list-style-type: none"> <li>BPD (Biparietal Diameter)</li> <li>GS (Gestational Sac Diameter)</li> </ul>		

## High-Density Broadband Five-frequency Probes

The system can be equipped with multiple veterinary special probes, which



Up to 5 frequencies for each probe



Observation with bigger angle and wider field of view



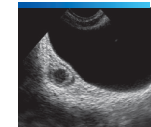
Embryonic Death & Fetus Retain



Pre-ovulatory Follicle



Gestation(40 days)



Pre-ovulatory Follicle